



KOVER™

BW1193

60x36x3 Rectangular Acrylic Shower Base (central drain)

SPECIFICATIONS

Features

- Rectangular shower base
- Acrylic base fiberglass reinforced
- 1522 mm x 912 mm (59 7/8 x 35 7/8 in.)
- Low-3 in. threshold (76 mm)
- Central drain
- Right integrated tiling flange on 2 sides
- Drain cover included

Colors

- White : BW1193-240

Certifications

The specified model meets or exceeds the following standards;

- IAPMO Z124
- CSA B45.5



Packaging

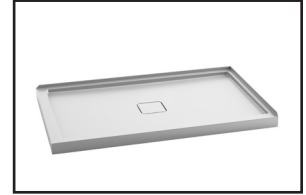
- **Dimensions:**
1560 mm x 960 mm x 120 mm
(61 1/2 x 37 13/16 x 4 3/4 in.)
- **Weight:** 63 lb (28.6 kg)

Installation Notes

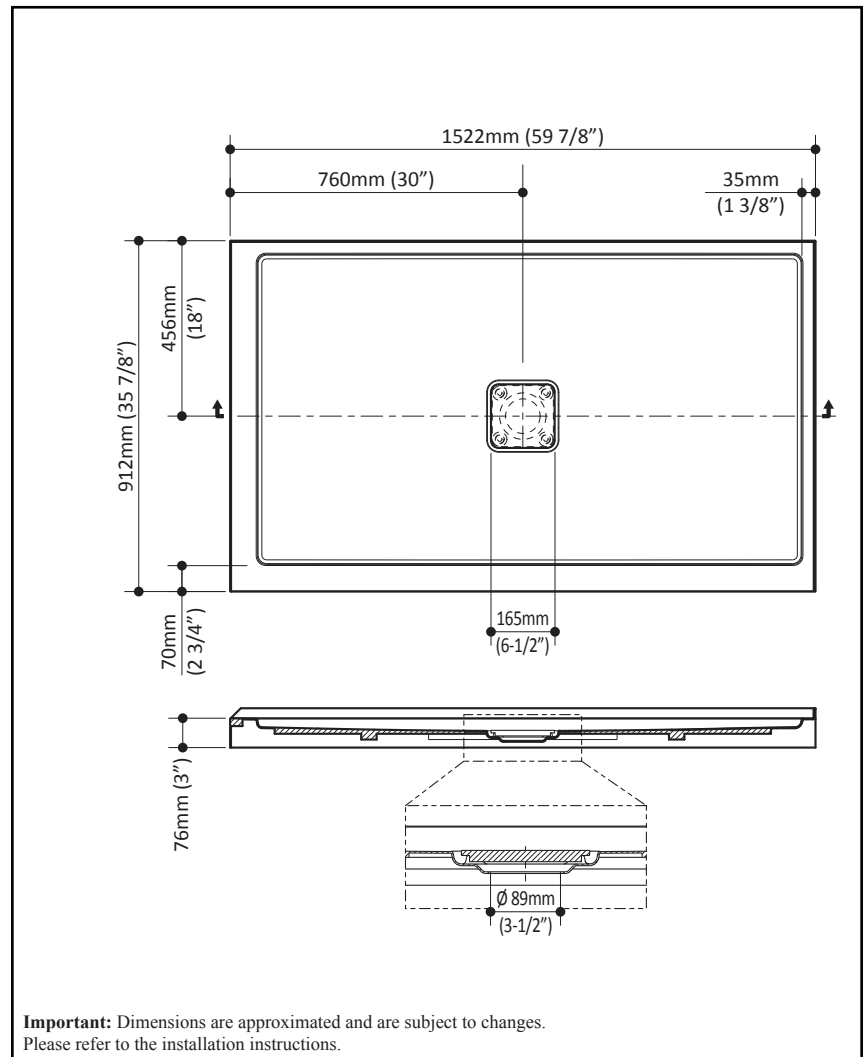
This product must be installed following the installation instructions provided.

WARRANTY

Kalia Inc. guarantees all aspects of its products to be free of defects in material and workmanship for normal residential use. **Refer to the warranty included with the Kalia products for details.**



Product dimensions:



Important: Dimensions are approximated and are subject to changes. Please refer to the installation instructions.

Kalia inc.
1355, 2nd Street
Sainte-Marie (Quebec)
Canada G6E 1G9

t. 1-418-387-9090
1 877 GO KALIA (1-877-465-2542)
f. 1-418-387-9089
www.KaliaStyle.com